



COMMERCIAL **TUMBLE DRYERS**

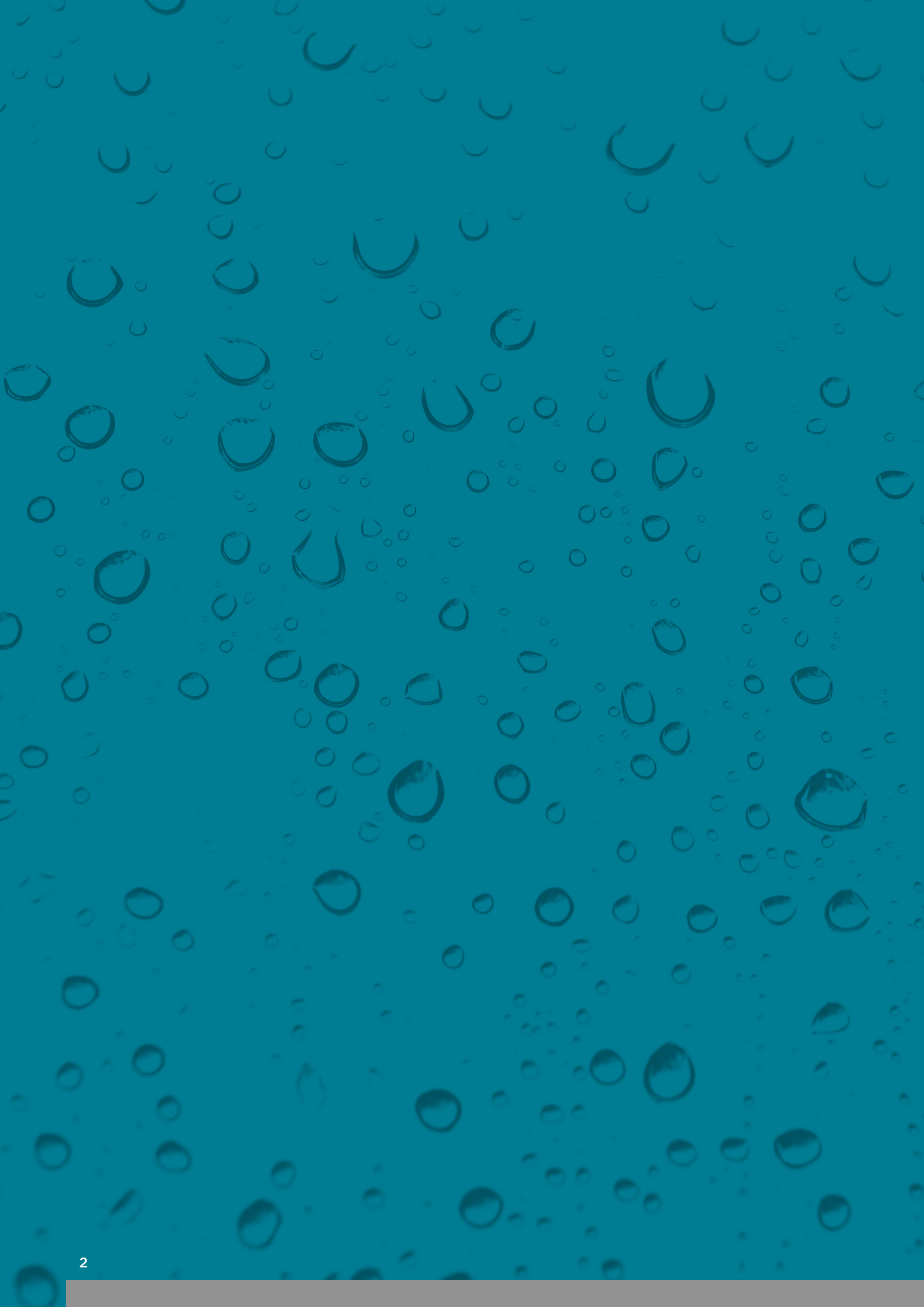
EFFICIENCY IN THE LAUNDRY ROOM



FREEPHONE

0800 028 8525

EMAIL sales@laundrymachines.co.uk



CONTENTS

Contents	3
About Us	4
Light Commercial Tumble Dryers	5
Commercial Tumble Dryers	6
Commercial Excellence Dryers	7
Data Sheets & Technical Specifications	8 - 27



TO PROVIDE THE HIGHEST QUALITY AND MOST RELIABLE COMMERCIAL LAUNDRY EQUIPMENT TO OUR CUSTOMERS - **CHANGING THE WORLD ONE LAUNDRY MACHINE AT A TIME.**



Since incorporation in 2004 MAG Equipment Ltd has evolved into a leading player in the commercial laundry sector. As an innovator the company has always been prepared to champion new initiatives whilst keeping its core values of providing a quality product and service to its customers at a competitive price.

Testimony to the above is the significant number of loyal customers that return to MAG for their ongoing requirements and proactively recommend MAG to other business associates. A key milestone in the company's development was in 2009 being awarded the UK distributorship for Primer ES the Spanish based commercial laundry equipment manufacturer. There are now literally thousands of Primer machines installed throughout the length and breadth of the country.

To ensure a comprehensive portfolio of machines MAG has supplemented the Primer range with its own brand semi commercial range plus access to other major manufacturers in order to provide

that 'one stop shop' for all laundry requirements. The company provides rental and service offerings to meet all requirements and has all the latest technology to ensure the key planning stage is handled in a professional and effective way.

MAG Equipment Ltd is truly committed to long term relationships with all its customers large or small and will always strive to provide the best equipment, service and support through ongoing investment and development.

LIGHT COMMERCIAL TUMBLE DRYERS

MAG SU95 9.5KG LIGHT COMMERCIAL TUMBLE DRYER

Our 9.5kg light commercial tumble dryer is reliable, efficient and easy to use. This tumble dryer has a wide door opening to make the loading and unloading of laundry easier for you and your staff, plus the new control panel improves usability. The fast, energy efficient cycles are one important benefit for those who are pressed for time and different temperature settings can be selected to meet your drying requirements. Another useful feature of this user-friendly machine is the easy to clean lint filter that helps make day-to-day operation straight forward.

9.5KG

GAS

ELECTRIC

KEY FEATURES:

- Pre-programmed cycles for easy selection
- Easy to clean lint filter ensuring maximum performance
- Fast dry cycles to improve efficiency & lower running costs
- Wide door opening for easy loading & access
- Tilted control panel for ease of use & better visibility
- Fully updatable firmware for future proofing

VARIATIONS / OPTIONS:

- Available in manual or coin operated
- Dryers can be gas heat or electric heat
- Side-by-side or stackable (upon request)



PRIMER COMMERCIAL TUMBLE DRYERS

Our Primer range of commercial tumble dryers are reliable, affordable & energy efficient making them an extremely popular choice across the UK and worldwide. Ongoing product developments help ensure our machines are equipped with the most up-to-date features for our customers so they can save time, energy and money.

Our tumble dryers are available in Gas Heat, Electric Heat or Steam Heat with various capacities including 12KG, 18KG, 29KG, 37KG, 50KG, 67KG & 83KG. The MAG Laundry Equipment team will help you select the best equipment for your business, however large or small.

12KG

18KG

29KG

37KG

50KG

67KG

83KG

KEY FEATURES:

- Stainless Steel Drum
- Reverse Action / Spin Stop
- Automatic Cool-Down
- Smart Dry Technology (optional)
- Double Glass (optional)
- Plus Much More



UPGRADE TO AN EXCELLENCE VERSION

ARE YOU LOOKING FOR THE MOST ENERGY EFFICIENT TUMBLE DRYER ON THE MARKET?

The Primer "Excellence" range of tumble dryers are said to be amongst the most efficient dryers in the world offering extra features for those customers who are looking for an extra efficient machine.

12KG

18KG

29KG

37KG

50KG

67KG

83KG

KEY FEATURES:

Double Door Glass, to increase heat isolation

SMART DRY Intelligence, to optimise the drying cycle

Humidity Sensor, the machine can be programmed to stop at a certain humidity

Air Recovery System, hot air is reintroduced into the drum to improve efficiency

Top Isolation, the machine is thermally and acoustically isolated



ASK OUR TEAM
ABOUT THE
EXCELLENCE
RANGE TODAY
FREEPHONE
0800 028 8525

DATA SHEETS AND TECHNICAL SPECIFICATIONS

- Models
- Dimensions
- Electrical connections
- Gas connections
- Energy consumption
- Plus more

DS-23 STANDARD

TUMBLE DRYER

KEY FEATURES:

- Construction in grey aluminized, stainless steel look.
- Big loading door (opening of 30°).
- Direct drive through a gearbox, no pulley.
- Timer Range:** Analogic control with time and temperature selection.
- Light indication of heating.
- (These models do not offer the moisture control function).
- PI Electronic Control Range:** Electronic control, display and touch screen, for the electronic control of the complete cycle of the process.
- DS-23 models offer the reverse turning of the drum.
- Stainless Steel Drum or standard.
- Mixed anti-radiant airflow to optimize and maximize the airflow in the drum.
- Efficient Drum: The new drum with stamped holes makes the flow from a partly hooded.
- New filter drawer with wide surface and improved airflow.
- Cool Down: Anti-rotate at the end of cycle.
- Models available in electric, gas or steam heating.
- Self-Serve:** STANDARD electronic control range.
- Have recent standard options for Loadmaster to work with centralized payment systems, with coin / token, or with property card systems, Electronic and gas heated models.



DS-23 PH DS-23












OPTIONS:

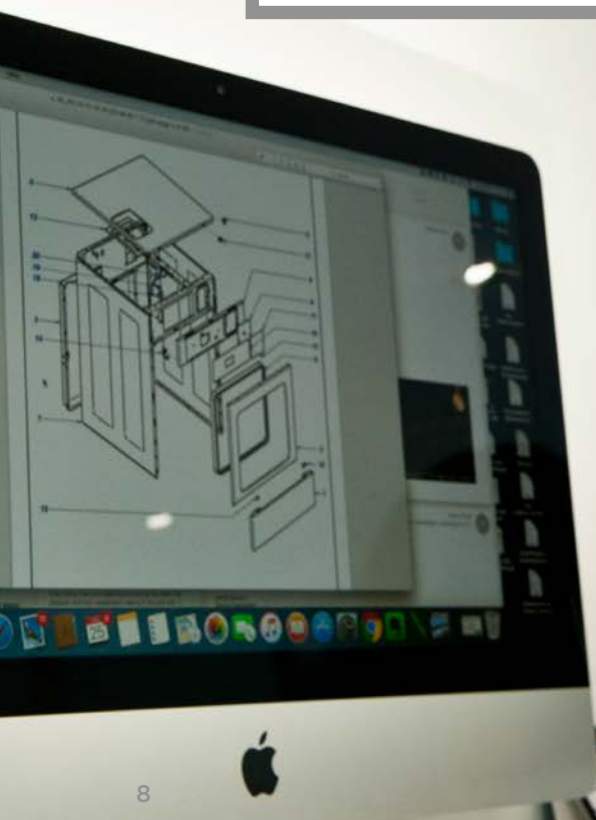
- Smart Dry Intelligent Moisture Control (PM Models).
- PI On Integrated Fire Extinguishing System (PM Models).
- PI (Heated).
- Stainless steel body.
- Stainless Steel panel.
- Low pressure steam battery.
- Control in 0-10 Hz.
- Heating versions 4kW to 30kW for gas heated or 480V to 50/60Hz for gas heated.

10

[illegible]

Technical information for each product can be found on the following pages or for further assistance telephone

01422 244733



SU95

LIGHT COMMERCIAL DRYER



TECHNICAL DATA	SU95 DRYER	SU95 WASHER/DRYER STACK	SU95 DRYER/DRYER STACK
Capacity (kg)	9.5	9.5/9.5	9.5/9.5
Width (mm)	683	683	683
Depth (mm)	711	744	711
Height (mm)	1121	1994	1994
Net Weight (kg)	68	177	125
Drum Volume (litres)	201	97/201	201/201
G Force (G)	-	-	-
Microprocessor Control	Yes	Yes	Yes
Free Standing	Yes	Yes	Yes
No. of Water Connections (Cold/Hot)	-	1/1	-
Water Connection Size ("BSP)	-	3/4	-
Exhaust Diameter (mm ; in)	102 ; 4"	102 ; 4"	(2 x) 102 ; 4"
Make-Up Air (m ² ; in ²)	0.013 ; 20	0.013 ; 20	0.026 ; 40
Airflow (m ³ /min ; ft ³ /min)	5.1 ; 180	5.1 ; 180	(2 x) 5.1 ; 180
Drain Connection: Pump (standpipe mm ; in)	-	50mm/2"	-
Drain Valve (mm ; in)	-	50mm/2"	-
Gas Rating (kW ; BTU)	5.9 ; 20,000	5.9 ; 20,000	(2 x) 5.9 ; 20,000
Gas Connection Size ("BSP)	3/8	3/8	(2 x) 3/8
ELECTRICS			
4.8kw Boiler Fed Washer (Volt/ph/Amp)	-	230/1/10	-
Self Heat Washer (Volt/ph/Amp)	-	230/1/25	-
Electric Heat Dryer (Volt/ph/Amp)	230/1/25	230/1/25	(2 x) 230/1/25
Gas Dryer (Volt/ph/Amp)	230/1/10	230/1/10	(2 x) 230/1/10
OPTIONAL ELECTRICS			
2.4kw Self Heat Washer (Volt/1ph/Amp)	-	230/1/13	-
4.8kw Self Heat Washer (Volt/3ph/Amp)	-	400/3/10	-

While every effort has been made to ensure the information provided is accurate, MAG Equipment Ltd accepts no liability whatsoever for any errors, inaccuracies or omissions and shall not be bound in any manner by any information provided.

DS-11-17 STANDARD TUMBLE DRYER

KEY FEATURES:

- Construction in grey skinplate, stainless steel look.
- Big loading door (opening of 180°).
- Direct drive through a gearbox, no pulley.
- **Timer Range:** Analogic control with time and temperature selection.
Light indication of heating. (These models do not allow the moisture control option).
- **PM Electronic Control Range:** Electronic control. Easy and intuitive to use, the electronic control offers a complete control of the process.
- Inverter: All models offer the reverse turning of the drum.
- Stainless Steel Drum as standard.
- Mixed axial-radial airflow to optimise and maximise the airflow circuit in the drum.
- Efficient Drum: The new drum with stamped holes makes sure the linen is gently handled.
- New filter drawer with wide surface and improved airflow.
- Cool Down: Anti-wrinkle at the end of cycle.
- Models available in electric, gas or steam heating.
- **Self-Service:** STANDARD electronic control range have several payment options for Laundromats: to work with centralized payment systems, with coin / token, or with prepay card systems. Electric and gas heated models.



DS-11-17 PM

DS-11-17



Emissions
CO₂/carbon
footprint



Energy
efficiency



Stainless steel



Microprocessor



Variator:
improves inverter
performance



Efficient drum
design



Dual airflow



Easy
maintenance



Filter

OPTIONS:

- Smart Dry: Intelligent Moisture Control. (PM Models).
- Fire Off: Integrated Fire Extinguishing System. (PM Models).
- Double doorglass.
- Stainless steel body.
- Stainless steel front panel.
- Low pressure steam battery.
- Model versions in 60 Hz.
- Marine versions 440V III 50/60 Hz No neutral or 480V III 50/60 Hz No neutral.

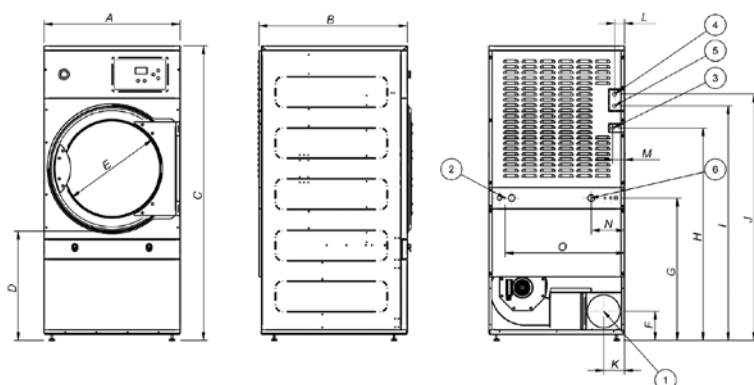


Smart dry



Fire off

TECHNICAL DATA		UNIT.	DS-11 STANDARD		DS-17 STANDARD	
CAPACITY						
Capacity 1/18	Kg	12		18		
Capacity 1/20	Kg	11		17		
Hourly Output STANDARD	Kg/h	21		33		
Evaporation capacity STANDARD	l/h	10,9		17,2		
DRUM						
Ø Drum	mm	750		750		
Ø Door	mm	574		574		
Door center height	mm	976		976		
Load hole bottom height	mm	689		689		
Drum length	mm	475		746		
Drum volume	l	210		330		
POWER						
Drum motor power	Kw	0,25		0,25		
Fan Motor Power STANDARD	Kw	0,25		0,25		
Total Installed power STANDARD	Kw	12,55		18,55		
Electric Heating (Installed power)	Kw	12		18		
Gas heating (installed Power) in KW	Kw	20,51		20,51		
Gas heating (installed el. power) STANDARD	Kw	0,55		0,55		
Steam heating (Steam Power KW)	Kw	30		30		
Steam heating (installed el. power) STANDARD	Kw	0,55		0,55		
CONNECTIONS		ELECTRICAL	STEAM / GAS	ELECTRICAL	STEAM / GAS	
Tension 230V- I + T	Nº x mm2 / A	3 x 35 / 63A	3 x 2,5 / 20A	-	3 x 2,5 / 20A	
Tension 230V- III + T	Nº x mm2 / A	4 x 10 / 40A	4 x 2,5 / 20A	4 x 16 / 63A	4 x 2,5 / 20A	
Tension 400V- III + N + T	Nº x mm2 / A	5 x 4 / 25A	5 x 2,5 / 20A	5 x 6 / 32A	5 x 2,5 / 20A	
Ø Gas inlet	BSP	1/2"		1/2"		
Ø Steam inlet	BSP	3/4"		3/4"		
Ø Condensed (Steam models)	BSP	3/4"		3/4"		
DIMENSIONS / PACKING DIMENSIONS						
Width / Width	mm	785 / 865		785 / 865		
Depth / Depth	mm	840 / 940		1110 / 1210		
Height / Height	mm	1694 / 1840		1694 / 1840		
Height without heating battery	mm	-		-		
Net weight / Gross weight	Kg	172 / 180		187 / 200		
OTHER						
Max airflow STANDARD	m3/h	850		850		
Ø Fume exhaust	mm	200		200		
Sound level STANDARD	dB	64		64		



- 01. Fumes outlet
- 02. Electrical connection
- 03. Gas connection
- 04. Steam connection
- 05. Condensation outlet
- 06. Anti fire water valve

	A	B	C	D	E	F	G	H	I	J	K	L	M	N	O
DS-11	785	840	1700	618	574	168	821	1226	1354	1422	121	56	68	192	690
DS-17	785	1010	1700	618	574	168	821	1226	1354	1422	121	56	68	192	690

While every effort has been made to ensure the information provided is accurate, MAG Equipment Ltd accepts no liability whatsoever for any errors, inaccuracies or omissions and shall not be bound in any manner by any information provided.

DS-23 STANDARD TUMBLE DRYER

KEY FEATURES:

- Construction in grey skinplate, stainless steel look.
- Big loading door (opening of 180°).
- Direct drive through a gearbox, no pulley.
- **Timer Range:** Analogic control with time and temperature selection.
- Light indication of heating. (These models do not allow the moisture control option).
- **PM Electronic Control Range:** Electronic control. Easy and intuitive to use, the electronic control offers a complete control of the process.
- Inverter: All models offer the reverse turning of the drum.
- Stainless Steel Drum as standard.
- Mixed axial-radial airflow to optimise and maximise the airflow circuit in the drum.
- Efficient Drum: The new drum with stamped holes makes sure the linen is gently handled.
- New filter drawer with wide surface and improved airflow.
- Cool Down: Anti-wrinkle at the end of cycle.
- Models available in electric, gas or steam heating.
- **Self-Service:** STANDARD electronic control range have several payment options for Laundromats: to work with centralized payment systems, with coin / token, or with prepay card systems. Electric and gas heated models.



DS-23 PM

DS-23



Emissions
CO₂/carbon
footprint



Energy
efficiency



Stainless steel



Microprocessor



Variator:
improves inverter
performance



Efficient drum
design



Dual airflow



Easy
maintenance

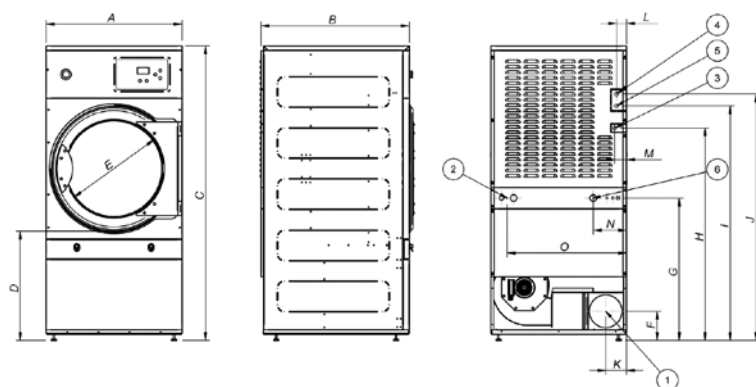


Filter

OPTIONS:

- Smart Dry: Intelligent Moisture Control. (PM Models).
- Fire Off: Integrated Fire Extinguishing System. (PM Models).
- Double doorglass.
- Stainless steel body.
- Stainless steel front panel.
- Low pressure steam battery.
- Model versions in 60 Hz.
- Marine versions 440V III 50/60 Hz No neutral or 480V III 50/60 Hz No neutral.

TECHNICAL DATA		UNIT.	DS-23 STANDARD
CAPACITY			
Capacity 1/18	Kg		26
Capacity 1/20	Kg		23
Hourly Output STANDARD	Kg/h		46
Evaporation capacity STANDARD	l/h		23,9
DRUM			
Ø Drum	mm		855
Ø Door	mm		574
Door center height	mm		1030
Load hole bottom height	mm		743
Drum length	mm		800
Drum volume	l		460
POWER			
Drum motor power	Kw		0,37
Fan Motor Power STANDARD	Kw		0,55
Total Installed power STANDARD	Kw		24,97
Electric Heating (Installed power)	Kw		24
Gas heating (installed Power) in KW	Kw		31
Gas heating (installed el. power) STANDARD	Kw		0,97
Steam heating (Steam Power KW)	Kw		49,2
Steam heating (installed el. power) STANDARD	Kw		0,97
CONNECTIONS		ELECTRICAL	STEAM / GAS
Tension 230V- I + T	Nº x mm2 / A	-	3 x 2,5 / 20A
Tension 230V- III + T	Nº x mm2 / A	4 x 25 / 80A	4 x 2,5 / 20A
Tension 400V- III + N + T	Nº x mm2 / A	5 x 10 / 40A	5 x 2,5 / 20A
Ø Gas inlet	BSP		1/2"
Ø Steam inlet	BSP		1"
Ø Condensed (Steam models)	BSP		1"
DIMENSIONS / PACKING DIMENSIONS			
Width / Width	mm		890/970
Depth / Depth	mm		1245/1345
Height / Height	mm		1812/1940
Height without heating battery	mm		-
Net weight / Gross weight	Kg		210/230
OTHER			
Max airflow STANDARD	m3/h		1200
Ø Fume exhaust	mm		200
Sound level STANDARD	dB		65



- 01. Fumes outlet
- 02. Electrical connection
- 03. Gas connection
- 04. Steam connection
- 05. Condensation outlet
- 06. Anti fire water valve

	A	B	C	D	E	F	G	H	I	J	K	L	M	N	O
DS-23	890	1245	1817	672	574	168	862	1344	1430	1532	137	113	112	787	685

While every effort has been made to ensure the information provided is accurate, MAG Equipment Ltd accepts no liability whatsoever for any errors, inaccuracies or omissions and shall not be bound in any manner by any information provided.

DS-28-35 STANDARD TUMBLE DRYER

KEY FEATURES:

- Construction in grey skinplate, stainless steel look.
- Big loading door (opening of 180°).
- Transmission by pulley and belt, with inverter.
- Front subjection by 2 strong and high-resistant wheels.
- **Timer Range:** Analogic control with time and temperature selection.
- Light indication of heating. (These models do not allow the moisture control option).
- **PM Electronic Control Range:** Electronic control. Easy and intuitive to use, the electronic control offers a complete control of the process.
- Inverter: All models offer the reverse turning of the drum.
- Stainless Steel Drum as standard.
- Mixed axial-radial airflow to optimise and maximise the airflow circuit in the drum.
- Efficient Drum: The new drum with stamped holes makes sure the linen is gently handled.
- New filter drawer with wide surface and improved airflow.
- Cool Down: Anti-wrinkle at the end of cycle.
- Models available in electric, gas or steam heating.
- **Self-Service:** STANDARD electronic control range have several payment options for Laundromats: to work with centralized payment systems, with coin / token, or with prepay card systems. Electric and gas heated models.



DS-28 PM

DS-28



Emissions
CO₂/carbon
footprint



Energy
efficiency



Stainless steel



Microprocessor



Variator:
improves inverter
performance



Efficient drum
design



Dual airflow



Easy
maintenance

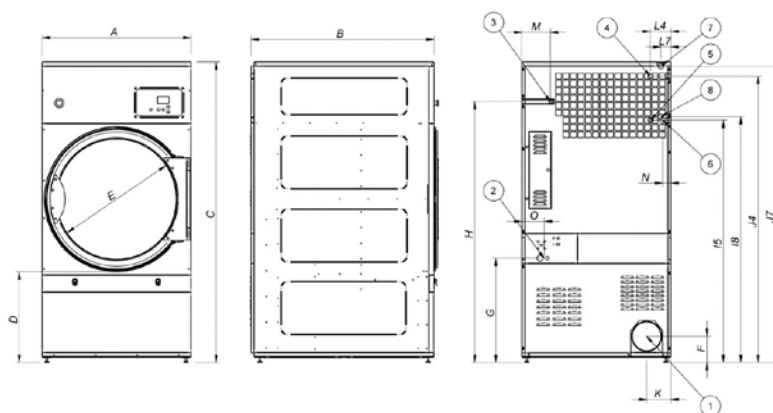


Filter

OPTIONS:

- Smart Dry: Intelligent Moisture Control. (PM Models).
- Fire Off: Integrated Fire Extinguishing System. (PM Models).
- Double doorglass.
- Stainless steel body.
- Stainless steel front panel.
- Low pressure steam battery.
- Model versions in 60 Hz.
- Marine versions 440V III 50/60 Hz No neutral or 480V III 50/60 Hz No neutral.

TECHNICAL DATA		UNIT.	DS-28 STANDARD		DS-35 STANDARD	
CAPACITY						
Capacity 1/18	Kg		31		37	
Capacity 1/20	Kg		27		33	
Hourly Output STANDARD	Kg/h		55		66	
Evaporation capacity STANDARD	l/h		28,6		34,3	
DRUM						
Ø Drum	mm		947		947	
Ø Door	mm		802		802	
Door center height	mm		1040		1040	
Load hole bottom height	mm		640		640	
Drum length	mm		780		936	
Drum volume	l		550		660	
POWER						
Drum motor power	Kw		0,55		0,55	
Fan Motor Power STANDARD	Kw		0,55		0,55	
Total Installed power STANDARD	Kw		31,15		37,15	
Electric Heating (Installed power)	Kw		30		36	
Gas heating (installed Power) in KW	Kw		41		41	
Gas heating (installed el. power) STANDARD	Kw		1,15		1,15	
Steam heating (Steam Power KW)	Kw		50,1		50,1	
Steam heating (installed el. power) STANDARD	Kw		1,15		1,15	
CONNECTIONS			ELECTRICAL	STEAM / GAS	ELECTRICAL	STEAM / GAS
Tension 230V- I + T	Nº x mm2 / A		-	3 x 2,5 / 20A	-	3 x 2,5 / 20A
Tension 230V- III + T	Nº x mm2 / A		4 x 35 / 100A	4 x 2,5 / 20A	4 x 50 / 125A	4 x 2,5 / 20A
Tension 400V- III + N + T	Nº x mm2 / A		5 x 16 / 63A	5 x 2,5 / 20A	5 x 16 / 63A	5 x 2,5 / 20A
Ø Gas inlet	BSP		1/2"		1/2"	
Ø Steam inlet	BSP		1"		1"	
Ø Condensed (Steam models)	BSP		1"		1"	
DIMENSIONS / PACKING DIMENSIONS						
Width / Width	mm		985/1065		985/1065	
Depth / Depth	mm		1054/1154		1210/1310	
Height / Height	mm		1946/2080		1946/2080	
Height without heating battery	mm		-		-	
Net weight / Gross weight	Kg		230/260		260/285	
OTHER						
Max airflow STANDARD	m3/h		1200		1200	
Ø Fume exhaust	mm		200		200	
Sound level STANDARD	dB		65		65	



- 01. Fumes outlet
- 02. Electrical connection
- 03. Gas connection
- 04. Steam connection galva battery
- 05. Condensation outlet galva battery
- 06. Anti fire water valve
- 07. Steam connection stainless battery
- 08. Condensation outlet stainless battery

	A	B	C	D	E	F	G	H	I5	I8	J4	J7	K	L4	L7	M	N	O
DS-28	985	1054	1946	577	802	172	685	1715	1594	-	1883	-	160	134	-	188	55	148
DS-35	985	1210	1946	577	802	172	685	1715	1594	1616	1883	1948	160	134	67	188	55	690

While every effort has been made to ensure the information provided is accurate, MAG Equipment Ltd accepts no liability whatsoever for any errors, inaccuracies or omissions and shall not be bound in any manner by any information provided.

DS-45-60-80 STANDARD TUMBLE DRYER

KEY FEATURES:

- Construction in grey skinplate, stainless steel look.
- Big loading door (opening of 180°).
- Transmission by pulley and belt, with inverter.
- Front subjection by 2 strong and high-resistant wheels.
- **Timer Range:** Analogic control with time and temperature selection.
- Light indication of heating. (These models do not allow the moisture control option).
- **PM Electronic Control Range:** Electronic control. Easy and intuitive to use, the electronic control offers a complete control of the process.
- Inverter: All models offer the reverse turning of the drum.
- Stainless Steel Drum as standard.
- Mixed axial-radial airflow to optimise and maximise the airflow circuit in the drum.
- Efficient Drum: The new drum with stamped holes makes sure the linen is gently handled.
- New filter drawer with wide surface and improved airflow.
- Cool Down: Anti-wrinkle at the end of cycle.
- Models available in electric, gas or steam heating.



DS-45-60-80 PM

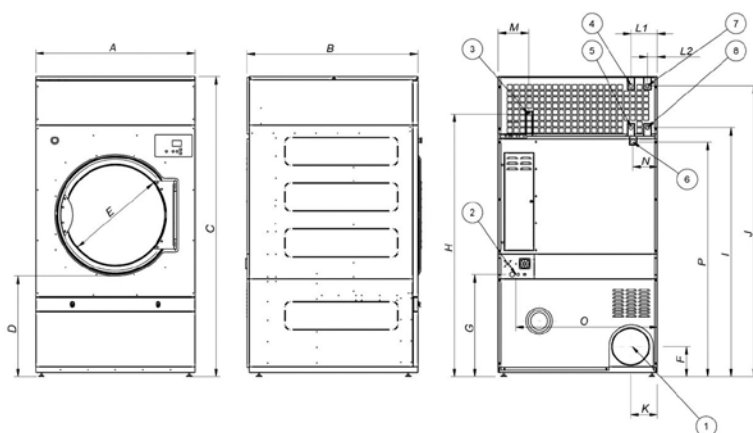
DS-45-60-80



OPTIONS:

- Smart Dry: Intelligent Moisture Control.
- Fire Off: Integrated Fire Extinguishing System.
- Double doorglass.
- Stainless steel body.
- Stainless steel front panel.
- Low pressure steam battery.
- Model versions in 60 Hz.
- Marine versions 440V III 50/60 Hz No neutral or 480V III 50/60 Hz No neutral.

TECHNICAL DATA	UNIT.	DS-45 STANDARD	DS-60 STANDARD	DS-80 STANDARD			
CAPACITY							
Capacity 1/18	Kg	50	67	83			
Capacity 1/20	Kg	45	60	75			
Hourly Output STANDARD	Kg/h	90	120	150			
Evaporation capacity STANDARD	l/h	46,6	62,5	76,7			
DRUM							
Ø Drum	mm	1225	1225	1225			
Ø Door	mm	802	802	802			
Door center height	mm	1275	1275	1275			
Load hole bottom height	mm	874	874	874			
Drum length	mm	760	1020	1252			
Drum volume	l	896	1202	1500			
POWER							
Drum motor power	Kw	0,75	1,1	1,5			
Fan Motor Power STANDARD	Kw	1,1	1,1	1,1			
Total Installed power STANDARD	Kw	55,9	74,25	74,65			
Electric Heating (Installed power)	Kw	54	72	72			
Gas heating (installed Power) in KW	Kw	60	90	120			
Gas heating (installed el. power) STANDARD	Kw	1,9	2,25	2,65			
Steam heating (Steam Power KW)	Kw	91,3	128	128			
Steam heating (installed el. power) STANDARD	Kw	1,9	2,25	2,65			
CONNECTIONS		ELECTRICAL	STEAM / GAS	ELECTRICAL	STEAM / GAS	ELECTRICAL	STEAM / GAS
Tension 230V- I + T	Nº x mm2 / A	-	-	-	-	-	-
Tension 230V- III + T	Nº x mm2 / A	-	4 x 2,5 / 20A	-	4 x 6 / 32A	-	4 x 6 / 32A
Tension 400V- III + N + T	Nº x mm2 / A	5 x 35 / 100A	5 x 2,5 / 20A	5 x 50 / 125A	5 x 6 / 32A	5 x 50 / 125A	5 x 6 / 32A
Ø Gas inlet	BSP	3/4"		3/4"		3/4"	
Ø Steam inlet	BSP	1"		1"		1"	
Ø Condensed (Steam models)	BSP	1"		1"		1"	
DIMENSIONS / PACKING DIMENSIONS							
Width / Width	mm	1270/1330		1270/1330		1270/1330	
Depth / Depth	mm	1085/1185		1345/1445		1577/1677	
Height / Height	mm	2380/2085		2380/2085		2380/2085	
Height without heating battery	mm	1950		1950		1950	
Net weight / Gross weight	Kg	395/430		529/575		657/715	
OTHER							
Max airflow STANDARD	m3/h	3000		3000		3000	
Ø Fume exhaust	mm	300		300		300	
Sound level STANDARD	dB	67		67		67	



- 01. Fumes outlet
- 02. Electrical connection
- 03. Gas connection
- 04. Steam connection DS-45
- 05. Condensation outlet DS-45
- 06. Anti fire water valve
- 07. Steam connection DS-60-80
- 08. Condensation outlet DS-60-80

	A	B	C	D	E	F	G	H	I	J	K	L1	L2	M	N	O	P
DS-45	1270	1085	2380	813	802	240	813	2088	1981	2314	214	211	-	244	195	1132	1865
DS-60	1270	1345	2380	813	802	240	813	2088	1981	2314	214	-	80	244	195	1132	1865
DS-80	1270	1577	2380	813	802	240	813	2088	1981	2314	214	-	80	244	195	1132	1865

While every effort has been made to ensure the information provided is accurate, MAG Equipment Ltd accepts no liability whatsoever for any errors, inaccuracies or omissions and shall not be bound in any manner by any information provided.

DS-11-17 EXCELLENCE TUMBLE DRYER

KEY FEATURES:

- Construction in grey skinplate, stainless steel look.
- Big loading door (opening of 180°).
- Direct drive through a gearbox, no pulley.
- **Air Recovery System:** Air recovery system for great energy efficiency.
- **Smart Dry:** The intelligent humidity sensor offers a precise control of the moisture in the linen. By this system the drying cycle will automatically stop when it reaches the set level of residual moisture.
- **Top Insulation:** The complete circuit of the air-flow has been thermally insulated in order to optimize the energy to heat the air and to maximize the energy efficiency. Double doorglass.
- Dual Airflow: The range of EXCELLENCE dryers complements the axialradial air flow with side and front openings to increase and optimize the airflow circuit, achieving the most efficient drying conditions.
- Fire Off: Integrated Fire Extinguishing System.
- **PM Electronic Control:** Easy and intuitive to use, the electronic control offers a complete control of the process.
- Inverter: All models offer the reverse turning of the drum.
- Stainless Steel Drum as standard.
- Mixed axial-radial airflow to optimise and maximise the airflow circuit in the drum.
- Efficient Drum: The new drum with stamped holes makes sure the linen is gently handled.
- New filter drawer with wide surface and improved airflow.
- Cool Down: Anti-wrinkle at the end of cycle.
- Models available in electric, gas or steam heating.



Stainless steel



Microprocessor



Variator:
improves inverter
performance



Air recirculation



Emissions
CO2/carbon
footprint



Energy
efficiency



Dual airflow



Efficient drum
design



Smart dry



Top insulation



Fire off



Easy
maintenance

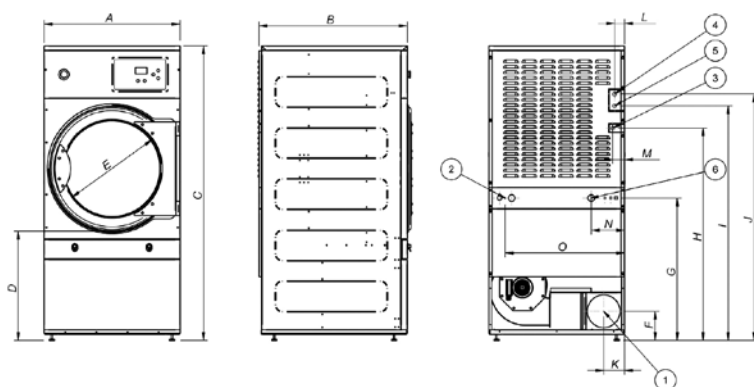


Filter

OPTIONS:

- Stainless steel body.
- Stainless steel front panel.
- Low pressure steam battery.
- Model versions in 60 Hz.
- Marine versions 440V III 50/60 Hz No neutral or 480V III 50/60 Hz No neutral.

TECHNICAL DATA		UNIT.	DS-11 EXCELLENCE		DS-17 EXCELLENCE	
CAPACITY						
Capacity 1/18	Kg	12		18		
Capacity 1/20	Kg	11		17		
Hourly Output EXCELLENCE	Kg/h	27		43		
Evaporation capacity EXCELLENCE	l/h	14,17		22,4		
DRUM						
Ø Drum	mm	750		750		
Ø Door	mm	574		574		
Door center height	mm	976		976		
Load hole bottom height	mm	689		689		
Drum length	mm	475		746		
Drum volume	l	210		330		
POWER						
Drum motor power	Kw	0,25		0,25		
Fan Motor Power EXCELLENCE	Kw	0,55		0,55		
Total Installed power EXCELLENCE	Kw	12,85		18,85		
Electric Heating (Installed power)	Kw	12		18		
Gas heating (installed Power) in KW	Kw	20,51		20,51		
Gas heating (installed el. power) EXCELLENCE	Kw	0,85		0,85		
Steam heating (Steam Power KW)	Kw	30		30		
Steam heating (installed el. power) EXCELLENCE	Kw	0,55		0,55		
CONNECTIONS		ELECTRICAL	STEAM / GAS	ELECTRICAL	STEAM / GAS	
Tension 230V- I + T	Nº x mm2 / A	3 x 35 / 63A	3 x 2,5 / 20A	-	3 x 2,5 / 20A	
Tension 230V- III + T	Nº x mm2 / A	4 x 10 / 40A	4 x 2,5 / 20A	4 x 16 / 63A	4 x 2,5 / 20A	
Tension 400V- III + N + T	Nº x mm2 / A	5 x 4 / 25A	5 x 2,5 / 20A	5 x 10 / 32A	5 x 2,5 / 20A	
Ø Gas inlet	BSP	1/2"		1/2"		
Ø Steam inlet	BSP	3/4"		3/4"		
Ø Condensed (Steam models)	BSP	3/4"		3/4"		
DIMENSIONS / PACKING DIMENSIONS						
Width / Width	mm	785 / 865		785 / 865		
Depth / Depth	mm	840 / 940		1110 / 1210		
Height / Height	mm	1694 / 1840		1694 / 1840		
Height without heating battery	mm	-		-		
Net weight / Gross weight	Kg	172 / 180		187 / 200		
OTHER						
Max airflow EXCELLENCE	m3/h	1200		1200		
Ø Fume exhaust	mm	200		200		
Sound level EXCELLENCE	dB	64		64		



- 01. Fumes outlet
- 02. Electrical connection
- 03. Gas connection
- 04. Steam connection
- 05. Condensation outlet
- 06. Anti fire water valve

	A	B	C	D	E	F	G	H	I	J	K	L	M	N	O
DS-11	785	840	1700	618	574	168	821	1226	1354	1422	121	56	68	192	690
DS-17	785	1010	1700	618	574	168	821	1226	1354	1422	121	56	68	192	690

While every effort has been made to ensure the information provided is accurate, MAG Equipment Ltd accepts no liability whatsoever for any errors, inaccuracies or omissions and shall not be bound in any manner by any information provided.

DS-23 EXCELLENCE TUMBLE DRYER

KEY FEATURES:

- Construction in grey skinplate, stainless steel look.
- Big loading door (opening of 180°).
- Direct drive through a gearbox, no pulley.
- **Air Recovery System:** Air recovery system for great energy efficiency.
- **Smart Dry:** The intelligent humidity sensor offers a precise control of the moisture in the linen. By this system the drying cycle will automatically stop when it reaches the set level of residual moisture.
- **Top Insulation:** The complete circuit of the air-flow has been thermally insulated in order to optimize the energy to heat the air and to maximize the energy efficiency. Double doorglass.
- Dual Airflow: The range of EXCELLENCE dryers complements the axialradial air flow with side and front openings to increase and optimize the airflow circuit, achieving the most efficient drying conditions.
- Fire Off: Integrated Fire Extinguishing System.
- **PM Electronic Control:** Easy and intuitive to use, the electronic control offers a complete control of the process.
- Inverter: All models offer the reverse turning of the drum.
- Stainless Steel Drum as standard.
- Efficient Drum: The new drum with stamped holes makes sure the linen is gently handled.
- New filter drawer with wide surface and improved airflow.
- Cool Down: Anti-wrinkle at the end of cycle.
- Models available in electric, gas or steam heating.



Stainless steel



Microprocessor



Variator:
improves inverter
performance



Air recirculation



Emissions
CO2/carbon
footprint



Energy
efficiency



Dual airflow



Efficient drum
design



Smart dry



Top insulation



Fire off



Easy
maintenance

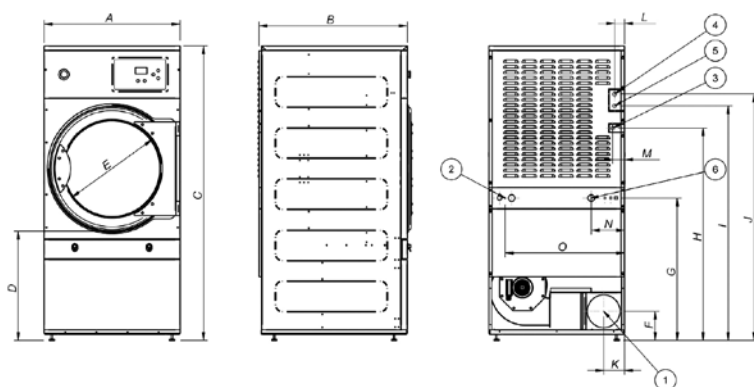


Filter

OPTIONS:

- Stainless steel body.
- Stainless steel front panel.
- Low pressure steam battery.
- Model versions in 60 Hz.
- Marine versions 440V III 50/60 Hz No neutral or 480V III 50/60 Hz No neutral.

TECHNICAL DATA		UNIT.	DS-23 EXCELLENCE
CAPACITY			
Capacity 1/18	Kg		26
Capacity 1/20	Kg		23
Hourly Output EXCELLENCE	Kg/h		60
Evaporation capacity EXCELLENCE	l/h		35,1
DRUM			
Ø Drum	mm		855
Ø Door	mm		574
Door center height	mm		1030
Load hole bottom height	mm		743
Drum length	mm		800
Drum volume	l		460
POWER			
Drum motor power	Kw		0,37
Fan Motor Power EXCELLENCE	Kw		0,75
Total Installed power EXCELLENCE	Kw		25,17
Electric Heating (Installed power)	Kw		24
Gas heating (installed Power) in KW	Kw		31
Gas heating (installed el. power) EXCELLENCE	Kw		1,17
Steam heating (Steam Power KW)	Kw		49,2
Steam heating (installed el. power) EXCELLENCE	Kw		1,17
CONNECTIONS		ELECTRICAL	STEAM / GAS
Tension 230V- I + T	Nº x mm2 / A	-	3 x 2,5 / 20A
Tension 230V- III + T	Nº x mm2 / A	4 x 25 / 80A	4 x 2,5 / 20A
Tension 400V- III + N + T	Nº x mm2 / A	5 x 10 / 40A	5 x 2,5 / 20A
Ø Gas inlet	BSP		1/2"
Ø Steam inlet	BSP		1"
Ø Condensed (Steam models)	BSP		1"
DIMENSIONS / PACKING DIMENSIONS			
Width / Width	mm		890/970
Depth / Depth	mm		1245/1345
Height / Height	mm		1812/1940
Height without heating battery	mm		-
Net weight / Gross weight	Kg		210/230
OTHER			
Max airflow EXCELLENCE	m3/h		1500
Ø Fume exhaust	mm		200
Sound level EXCELLENCE	dB		65



- 01. Fumes outlet
- 02. Electrical connection
- 03. Gas connection
- 04. Steam connection
- 05. Condensation outlet
- 06. Anti fire water valve

	A	B	C	D	E	F	G	H	I	J	K	L	M	N	O
DS-23	890	1245	1817	672	574	168	862	1344	1430	1532	137	113	112	787	685

While every effort has been made to ensure the information provided is accurate, MAG Equipment Ltd accepts no liability whatsoever for any errors, inaccuracies or omissions and shall not be bound in any manner by any information provided.

DS-28-35 EXCELLENCE TUMBLE DRYER

KEY FEATURES:

- Construction in grey skinplate, stainless steel look.
- Big loading door (opening of 180°).
- Transmission by pulley and belt, with inverter.
- **Air Recovery System:** Air recovery system for great energy efficiency.
- **Smart Dry:** The intelligent humidity sensor offers a precise control of the moisture in the linen. By this system the drying cycle will automatically stop when it reaches the set level of residual moisture.
- **Top Insulation:** The complete circuit of the air-flow has been thermally insulated in order to optimize the energy to heat the air and to maximize the energy efficiency. Double doorglass.
- Dual Airflow: The range of EXCELLENCE dryers complements the axialradial air flow with side and front openings to increase and optimize the airflow circuit, achieving the most efficient drying conditions.
- Fire Off: Integrated Fire Extinguishing System.
- **PM Electronic Control:** Easy and intuitive to use, the electronic control offers a complete control of the process.
- Inverter: All models offer the reverse turning of the drum.
- Stainless Steel Drum as standard.
- Efficient Drum: The new drum with stamped holes makes sure the linen is gently handled.
- New filter drawer with wide surface and improved airflow.
- Cool Down: Anti-wrinkle at the end of cycle.
- Models available in electric, gas or steam heating.



Stainless steel



Microprocessor



Variator:
improves inverter
performance



Air recirculation



Emissions
CO2/carbon
footprint



Energy
efficiency



Dual airflow



Efficient drum
design



Smart dry



Top insulation



Fire off



Easy
maintenance

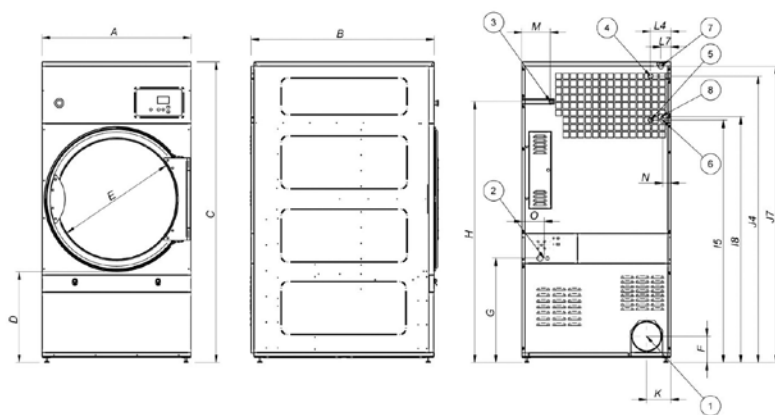


Filter

OPTIONS:

- Stainless steel body.
- Stainless steel front panel.
- Low pressure steam battery.
- Model versions in 60 Hz.
- Marine versions 440V III 50/60 Hz No neutral or 480V III 50/60 Hz No neutral.

TECHNICAL DATA		UNIT.	DS-28 EXCELLENCE		DS-35 EXCELLENCE	
CAPACITY						
Capacity 1/18	Kg		31		37	
Capacity 1/20	Kg		27		33	
Hourly Output EXCELLENCE	Kg/h		72		86	
Evaporation capacity EXCELLENCE	l/h		44,6		44,6	
DRUM						
Ø Drum	mm		947		947	
Ø Door	mm		802		802	
Door center height	mm		1040		1040	
Load hole bottom height	mm		640		640	
Drum length	mm		780		936	
Drum volume	l		550		660	
POWER						
Drum motor power	Kw		0,55		0,55	
Fan Motor Power EXCELLENCE	Kw		0,75		0,75	
Total Installed power EXCELLENCE	Kw		31,35		37,35	
Electric Heating (Installed power)	Kw		30		36	
Gas heating (installed Power) in KW	Kw		41		41	
Gas heating (installed el. power) EXCELLENCE	Kw		1,35		1,35	
Steam heating (Steam Power KW)	Kw		50,1		50,1	
Steam heating (installed el. power) EXCELLENCE	Kw		1,35		1,35	
CONNECTIONS			ELECTRICAL	STEAM / GAS	ELECTRICAL	STEAM / GAS
Tension 230V- I + T	Nº x mm2 / A		-	3 x 2,5 / 20A	-	3 x 2,5 / 20A
Tension 230V- III + T	Nº x mm2 / A		4 x 35 / 100A	4 x 2,5 / 20A	4 x 50 / 125A	4 x 2,5 / 20A
Tension 400V- III + N + T	Nº x mm2 / A		5 x 16 / 63A	5 x 2,5 / 20A	5 x 16 / 63A	5 x 2,5 / 20A
Ø Gas inlet	BSP		1/2"		1/2"	
Ø Steam inlet	BSP		1"		1"	
Ø Condensed (Steam models)	BSP		1"		1"	
DIMENSIONS / PACKING DIMENSIONS						
Width / Width	mm		985/1065		985/1065	
Depth / Depth	mm		1054/1154		1210/1310	
Height / Height	mm		1946/2080		1946/2080	
Height without heating battery	mm		-		-	
Net weight / Gross weight	Kg		230/260		260/285	
OTHER						
Max airflow EXCELLENCE	m3/h		1500		1500	
Ø Fume exhaust	mm		200		200	
Sound level EXCELLENCE	dB		65		65	



- 01. Fumes outlet
- 02. Electrical connection
- 03. Gas connection
- 04. Steam connection galva battery
- 05. Condensation outlet galva battery
- 06. Anti fire water valve
- 07. Steam connection stainless battery
- 08. Condensation outlet stainless battery

	A	B	C	D	E	F	G	H	I5	I8	J4	J7	K	L4	L7	M	N	O
DS-28	985	1054	1946	577	802	172	685	1715	1594	-	1883	-	160	134	-	188	55	148
DS-36	985	1210	1946	577	802	172	685	1715	1594	1616	1883	1948	160	134	67	188	55	690

While every effort has been made to ensure the information provided is accurate, MAG Equipment Ltd accepts no liability whatsoever for any errors, inaccuracies or omissions and shall not be bound in any manner by any information provided.

DS-45-60-80 EXCELLENCE TUMBLE DRYER

KEY FEATURES:

- Construction in grey skinplate, stainless steel look.
- Big loading door (opening of 180°).
- Transmission by pulley and belt, with inverter.
- Front subjection by 2 strong and high-resistant wheels.
- **Air Recovery System:** Air recovery system for great energy efficiency.
- **Smart Dry:** The intelligent humidity sensor offers a precise control of the moisture in the linen. By this system the drying cycle will automatically stop when it reaches the set level of residual moisture.
- **Top Insolation:** The complete circuit of the air-flow has been thermally insulated in order to optimize the energy to heat the air and to maximize the energy efficiency. Double doorglass.
- Dual Airflow: The range of EXCELLENCE dryers complements the axialradial air flow with side and front openings to increase and optimize the airflow circuit, achieving the most efficient drying conditions.
- Fire Off: Integrated Fire Extinguishing System.
- **PM Electronic Control:** Easy and intuitive to use, the electronic control offers a complete control of the process.
- Inverter: All models offer the reverse turning of the drum.
- Stainless Steel Drum as standard.
- Efficient Drum: The new drum with stamped holes makes sure the linen is gently handled.
- New filter drawer with wide surface and improved airflow.
- Cool Down: Anti-wrinkle at the end of cycle.
- Models available in electric, gas or steam heating.



Stainless steel



Microprocessor



Variator:
improves inverter
performance



Air recirculation



Emissions
CO2/carbon
footprint



Energy
efficiency



Dual airflow



Efficient drum
design



Smart dry



Top insulation



Fire off



Easy
maintenance

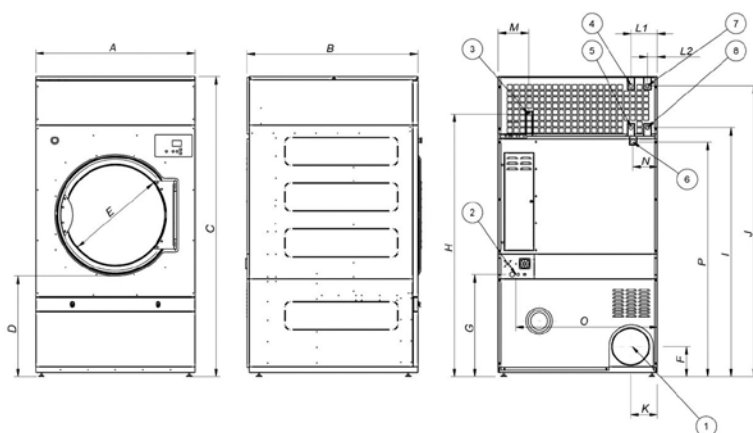


Filter

OPTIONS:

- Stainless steel body.
- Stainless steel front panel.
- Low pressure steam battery.
- Model versions in 60 Hz.
- Marine versions 440V III 50/60 Hz No neutral or 480V III 50/60 Hz No neutral.

TECHNICAL DATA	UNIT.	DS-45 EXCELLENCE	DS-60 EXCELLENCE	DS-80 EXCELLENCE			
CAPACITY							
Capacity 1/18	Kg	50	67	83			
Capacity 1/20	Kg	45	60	75			
Hourly Output EXCELLENCE	Kg/h	117	156	195			
Evaporation capacity EXCELLENCE	l/h	60,6	81,2	99,7			
DRUM							
Ø Drum	mm	1225	1225	1225			
Ø Door	mm	802	802	802			
Door center height	mm	1275	1275	1275			
Load hole bottom height	mm	874	874	874			
Drum length	mm	760	1020	1252			
Drum volume	l	896	1202	1500			
POWER							
Drum motor power	Kw	0,75	1,1	1,5			
Fan Motor Power EXCELLENCE	Kw	2,2	2,2	2,2			
Total Installed power EXCELLENCE	Kw	57	75,35	75,75			
Electric Heating (Installed power)	Kw	54	72	72			
Gas heating (installed Power) in KW	Kw	60	90	120			
Gas heating (installed el. power) EXCELLENCE	Kw	3	3,35	3,75			
Steam heating (Steam Power KW)	Kw	91,3	128	128			
Steam heating (installed el. power) EXCELLENCE	Kw	3	3,35	3,75			
CONNECTIONS		ELECTRICAL	STEAM / GAS	ELECTRICAL	STEAM / GAS	ELECTRICAL	STEAM / GAS
Tension 230V- I + T	Nº x mm2 / A	-	-	-	-	-	-
Tension 230V- III + T	Nº x mm2 / A	-	4 x 2,5 / 20A	-	4 x 6 / 32A	-	4 x 6 / 32A
Tension 400V- III + N + T	Nº x mm2 / A	5 x 35 / 100A	5 x 2,5 / 20A	5 x 50 / 125A	5 x 6 / 32A	5 x 50 / 125A	5 x 6 / 32A
Ø Gas inlet	BSP	3/4"		3/4"		3/4"	
Ø Steam inlet	BSP	1"		1"		1"	
Ø Condensed (Steam models)	BSP	1"		1"		1"	
DIMENSIONS / PACKING DIMENSIONS							
Width / Width	mm	1270/1330		1270/1330		1270/1330	
Depth / Depth	mm	1085/1185		1345/1445		1577/1677	
Height / Height	mm	2380/2085		2380/2085		2380/2085	
Height without heating battery	mm	1950		1950		1950	
Net weight / Gross weight	Kg	395/430		529/575		657/715	
OTHER							
Max airflow EXCELLENCE	m3/h	4500		4500		4500	
Ø Fume exhaust	mm	300		300		300	
Sound level EXCELLENCE	dB	67		67		67	



- 01. Fumes outlet
- 02. Electrical connection
- 03. Gas connection
- 04. Steam connection DS-45
- 05. Condensation outlet DS-45
- 06. Anti fire water valve
- 07. Steam connection DS-60-80
- 08. Condensation outlet DS-60-80

	A	B	C	D	E	F	G	H	I	J	K	L1	L2	M	N	O	P
DS-45	1270	1085	2380	813	802	240	813	2088	1981	2314	214	211	-	244	195	1132	1865
DS-60	1270	1345	2380	813	802	240	813	2088	1981	2314	214	-	80	244	195	1132	1865
DS-80	1270	1577	2380	813	802	240	813	2088	1981	2314	214	-	80	244	195	1132	1865

While every effort has been made to ensure the information provided is accurate, MAG Equipment Ltd accepts no liability whatsoever for any errors, inaccuracies or omissions and shall not be bound in any manner by any information provided.

DSD-11-17

TUMBLE DRYER

KEY FEATURES:

- Construction in grey skinplate, stainless steel look.
- Big loading door (opening of 180°).
- Direct drive through a gearbox, no pulley.
- **PM Electronic Control:** Easy and intuitive to use, the electronic control offers a complete control of the process.
- Inverter: All models offer the reverse turning of the drum.
- Stainless Steel standard.
- Mixed axial-radial airflow to optimise and maximise the airflow circuit in the drum.
- Efficient Drum: The new drum with stamped holes makes sure the linen is gently handled.
- New filter drawer with wide surface and improved airflow.
- Cool Down: Anti-wrinkle at the end of cycle.
- Models available in electric or gas.
- **Self-Service:** there are three self-service versions: to connect to a central pay, with a coin kit to work with coins/tokens, and with two coin kits (one for each microprocessor/drum).



Emissions
CO2/carbon
footprint



Energy
efficiency



Stainless steel



Microprocessor



Variator:
improves inverter
performance



Efficient drum
design



Dual airflow



Easy
maintenance



Filter

OPTIONS:

- Smart Dry: Intelligent Moisture Control.
- Fire Off: Integrated Fire Extinguishing System.
- Double doorglass.
- Stainless steel body.
- Stainless steel front panel.
- Model versions in 60 Hz.
- Marine versions 440V III 50/60 Hz No neutral or 480V III 50/60 Hz No neutral.

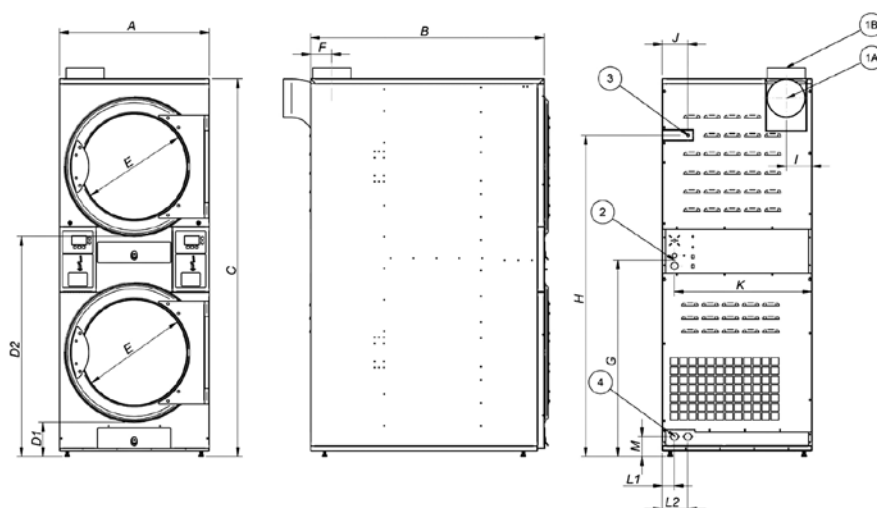


Smart dry



Fire off

TECHNICAL DATA		UNIT.	DSD-11 PM		DSD-17 PM	
CAPACITY						
Capacity 1/18	Kg		23		37	
Capacity 1/20	Kg		22		34	
Hourly Output	Kg/h		-/34		-/53	
Evaporation capacity	l/h		-/17,5		-/27,4	
DRUM						
Ø Drum	mm		750		750	
Ø Door	mm		574		574	
Door center height	mm		547/1522		547/1522	
Load hole bottom height	mm		260/1235		260/1235	
Drum length	mm		475		746	
Drum volume	l		210		330	
POWER						
Drum motor power	Kw		0,25*2		0,25*2	
Fan Motor Power	Kw		-/ 0,25*2		-/ 0,25*2	
Total Installed power	Kw		-/25,1		-/25,1	
Electric Heating (Installed power)	Kw		12x2		12x2	
Gas heating (installed Power) in KW	Kw		12x2		12x2	
Gas heating (installed el. power)	Kw		-/1,1		-/1,1	
CONNECTIONS			ELECTRICAL	STEAM / GAS	ELECTRICAL	STEAM / GAS
Tension 230V- I + T	Nº x mm2 / A		-	3 x 2,5 / 20A	-	3 x 2,5 / 20A
Tension 230V- III + T	Nº x mm2 / A		4 x 25 / 80A	4 x 2,5 / 20A	4 x 25 / 80A	4 x 2,5 / 20A
Tension 400V- III + N + T	Nº x mm2 / A		5 x 10 / 40A	5 x 2,5 / 20A	5 x 10 / 40A	5 x 2,5 / 20A
DIMENSIONS / PACKING DIMENSIONS						
Width / Width	mm		785/865		785/865	
Depth / Depth	mm		955/1055		1225/1325	
Height / Height	mm		1980/2126		1980/2126	
Net weight / Gross weight	Kg		260/268		290/303	
OTHER						
Max airflow	m3/h		-/500*2		-/500*2	
Ø Fume exhaust	mm		200		200	
Sound level	dB		64		64	



- 1A. Fumes outlet (rear option)
- 1B. Fumes outlet (upper option)
- 02. Electrical connection
- 03. Gas connection
- 04. Anti fire water valves

	A	B	C	D1	D2	E	F	G	H	I	J	K	L1	L2	M
DSD-11	785	955	1980	189	1164	574	111	1031	1686	135	135	721	63	133	105
DSD-17	785	1225	1980	189	1164	574	111	1031	1686	135	135	721	63	133	105

While every effort has been made to ensure the information provided is accurate, MAG Equipment Ltd accepts no liability whatsoever for any errors, inaccuracies or omissions and shall not be bound in any manner by any information provided.



HEAD OFFICE:

MAG Equipment Ltd

MAG House, Chatham Street

Halifax, West Yorkshire, HX1 5BU

0800 028 8525

sales@laundrymachines.co.uk

www.maglaundryequipment.co.uk

