

Instructions Manual



MACHINES FOR THE INDUSTRIAL LAUNDRY

**FORM FINISHING EQUIPMENT
FDA-A**

CONTENTS

| | | | |
|---|------------------------------------|----|---------------------------------|
| 1 | INTRODUCTION | 10 | OVERALL DIMENSIONS AND DRAWINGS |
| 2 | GENERAL DESCRIPTION | 11 | HAZARDOUS USE |
| 3 | MACHINE IDENTIFICATION | 12 | MAINTENANCE PROCEDURES |
| 4 | TECHNICAL FEATURES | 13 | DISPOSAL |
| 5 | MACHINE COMPONENTS | 14 | HOW TO ORDER SPARE PARTS |
| 6 | MACHINE UNPACKING AND INSTALLATION | 15 | HANDLING AND TRANSPORT |
| 7 | INSTRUCTIONS FOR USE | 16 | WARRANTY |
| 8 | TROUBLESHOOTING AND SOLVING | | |
| 9 | PRECAUTIONS | | |

1 INTRODUCTION

The present user's and maintenance manual refers to the ironing table.

It is possible to receive the latest release from our Technical Commercial Department.

The present user's and maintenance manual contains important information for the operator's health safeguard and safety.

This manual has to be read and kept carefully, in order to be always at the operator's disposal in case of need.

PRIMER cannot be held liable for any damage to things or injury to persons caused by improper use of the machine in contrast with these instructions.

Any possible modifications effected on the components of the machine or its different use without prior written authorization by PRIMER, relieve the latter of injury to persons and / or damages to things, voiding any warranty bindings, as well.

2 GENERAL DESCRIPTION

It is a complete ironing table, which doesn't require any supporting equipment for its operation, except for an external power supply.

The machine features: a broad universal ironing board and a sleeve shape, both of which are padded, electrically heated and equipped with a vacuum device, a garment tray, a control panel to adjust the board temperature and to operate the different working units, a professional steam iron with built-in boiler, a water feeding pump and a tank, enabling to iron several hours without having to refill the boiler with new water.

Thanks to its operation controlled by pedals on both sides, this very user-friendly and efficient ironing table is also suitable for left-handers.

3 MACHINE IDENTIFICATION

A tag placed on one side of the machine indicates type, serial number, year of construction and the voltage of the machine.

4 TECHNICAL FEATURES

| TECHNICAL FEATURES | |
|---|----------------------|
| Power supply | 230V – 1ph / 50 Hz |
| Power consumption | 3 kW |
| Sound intensity level | < 70 dB(A) |
| Working temperature | + 5 ÷ + 80 °C |
| Working humidity | 90 % max. |
| Storing temperature | - 20 ÷ + 50 °C |
| Net dimension | 1380 x 380 x 930 mm. |
| Net weight | 42 Kg |
| Overall dimensions (packaging included) | 1300 x 520 x 1020 mm |
| Gross weight (packaging included) | 45 Kg |

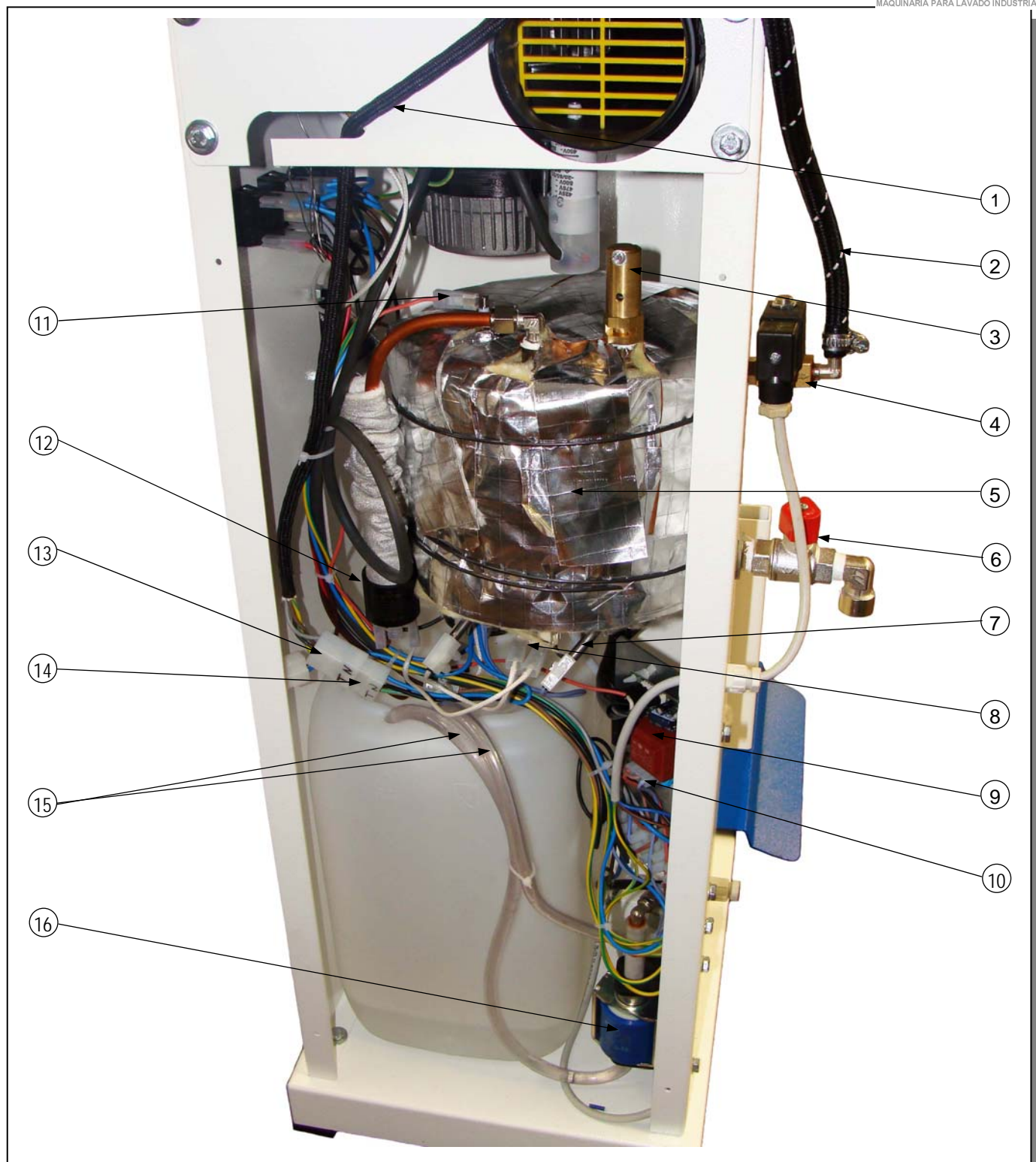
WARNING: The machine must not be supplied with different voltages than those indicated on the table.

5 MACHINE COMPONENTS

The machine features the following main components:

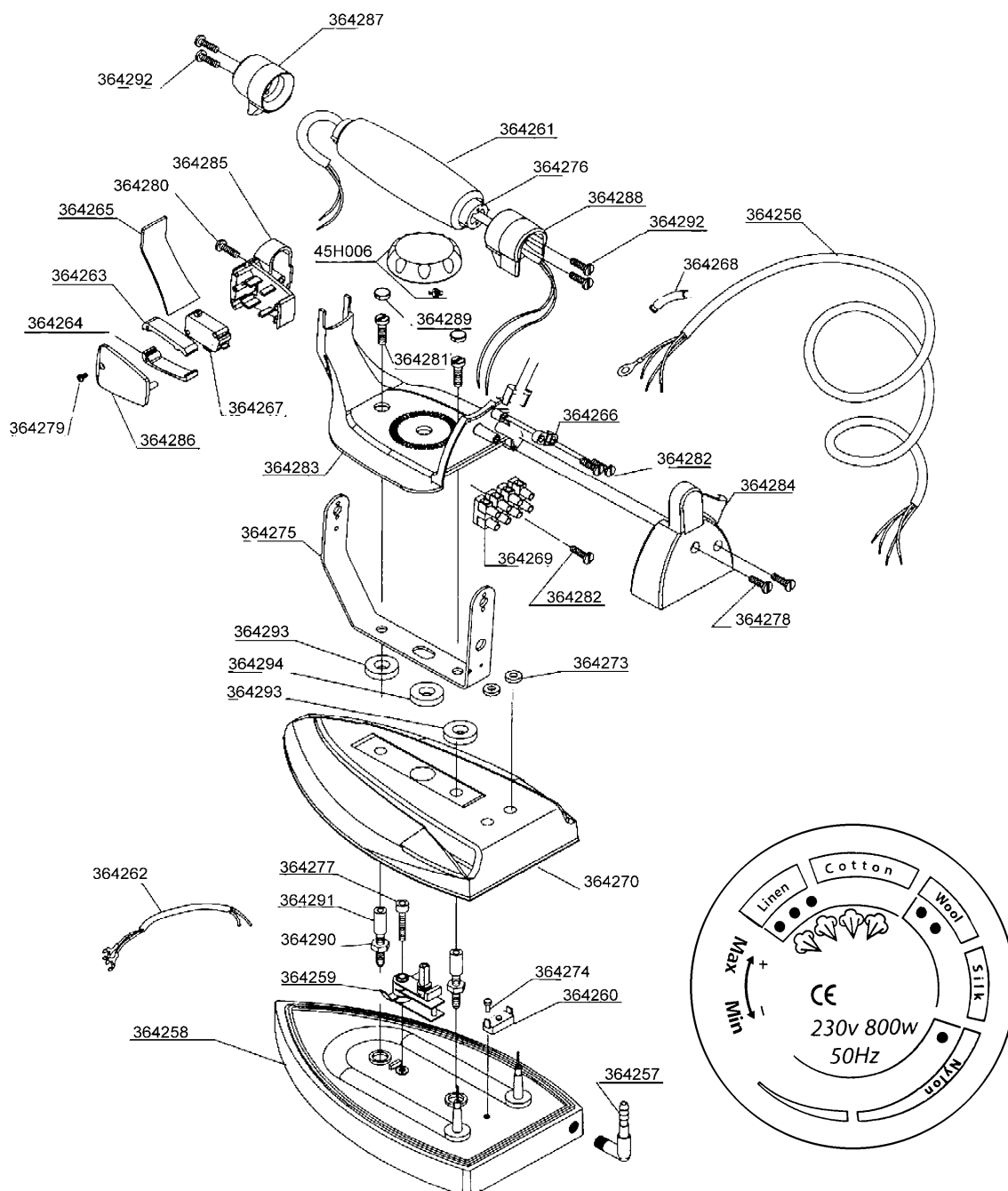


| Pos. | ARTICLE | DESCRIPTION | Pos. | ARTICLE | DESCRIPTION |
|------|-----------|----------------------------|------|-----------|----------------------------------|
| 1 | 4GHZ14H06 | Sleeve shape joint | 11 | 4GH06D034 | Water feeding hose |
| 2 | 4GH163472 | Sleeve shape | 12 | 4GH163489 | Board |
| 3 | 4GH163473 | Sleeve shape plate | 13 | 4GH163480 | Board plate |
| 4 | 4GHZ27P33 | Sleeve shape padding | 14 | 4GHZ27P32 | Board padding |
| 5 | 4GH534292 | Antenna | 15 | 4GH163487 | Frame |
| 6 | 4GH25A001 | Silicone pad for iron rest | 16 | 4GH173443 | Tubular support for garment tray |
| 7 | 4GH163488 | Rear panel | 17 | 4GH274208 | Garment tray cloth |
| 8 | 4GHZ01S10 | Steam iron mod. K | 18 | 4GH163484 | Vacuum control pedal |
| 9 | 4GH165037 | Water tank | 19 | 4GH163486 | Bedplate |
| 10 | 4GH163485 | Iron rest tray | | | |



| Pos. | ARTICLE | DESCRIPTION | Pos. | ARTICLE | DESCRIPTION |
|------|-----------|-------------------------------------|------|-----------|----------------------------------|
| 1 | 4GH46B001 | Electric cable for steam iron | 9 | 4GH25L043 | Printed circuit board |
| 2 | 4GH07A001 | Steam hose 2.4 m | 10 | 4GH30A001 | PCB-wiring |
| 3 | 4GH38S001 | Safety relief valve | 11 | 4GH49E005 | Boiler probe |
| 4 | 4GH39B042 | Steam solenoid valve | 12 | 4GH45G012 | Pressure switch |
| 5 | 4GH201018 | Boiler complete with heater 1450W | 13 | 4GH28D027 | Iron plug |
| | 4GH201011 | Boiler drum | 14 | 4GH28D026 | Steam iron socket |
| 6 | 4GH37A010 | Boiler discharge cock | 15 | 4GH06D030 | Hoses for water feeding/recovery |
| 7 | 4GH212035 | Boiler heater 1450W | 16 | 4GH207P14 | Water pump kit |
| 8 | 4GH45B018 | Safety thermostat for boiler heater | | | |

Steam iron mod. K art. 4GHZ18D00



| ARTICLE | DESCRIPTION | ARTICLE | DESCRIPTION | ARTICLE | DESCRIPTION |
|-----------|--|-----------|--|-----------|---|
| 4GH364273 | Cable holder for table heater | 4GH364278 | Self-tapping screw for rear handle | 4GH364287 | Front handle support |
| 4GH364256 | Electric cable for steam iron | 4GH364279 | Screw for iron microswitch | 4GH364288 | Rear handle support |
| 4GH364274 | Thermostat screw | 4GH364280 | Screw for microswitch holder 3,5 x 19 AU | 4GH364289 | Screw caps for iron |
| 4GH364257 | Angle for hose fitting out of nickel brass | 4GH364281 | Fixing screw for handle M5 x 10 ZNB | 4GH364290 | Brass washer/spacer |
| 4GH364258 | Finished iron plate | 4GH364282 | Screw for terminal board | 4GH364291 | Brass spacer male female |
| 4GH364259 | Adjustable thermostat | 4GH364283 | Handle cover | 4GH364267 | Complete iron microswitch |
| 4GH364260 | Thermostat with manual reset | 4GH364284 | Rear handle for iron | 4GH364292 | Handle fixing screw |
| 4GH364261 | Cork handle | 4GH364285 | Iron switch holder | 4GH45H006 | Knob out of black bakelite |
| 4GH364275 | Bracket for steam iron | 4GH364286 | Cover for switch holde | 4GH364293 | Screw washer to place underneath handle |
| 4GH364270 | Steam iron hood | 4GH364263 | Upper iron switch | 4GH364294 | Knob washer to place underneath handle |
| 4GH364262 | Steam iron wiring | 4GH364264 | Lower iron switch | 4GH364268 | Electric cable holder |
| 4GH364276 | Insert for iron handle | 4GH364265 | Bracket cover for iron | 4GH364269 | 4 stud terminal board |
| 4GH364277 | Fixing screw M4 x 22 for thermostat | 4GH364266 | Cable retainer for iron | | |

6 MACHINE UNPACKING AND INSTALLATION

WARNING: The unit must be installed, opened and repaired by fully qualified technicians only.

6.1 UNPACKING

Find the most suitable place where to put the machine, then remove the packaging. Make sure that the machine has not been damaged during the transport and the storage.

The packaging material does not require any special precautions for its disposal, for it is not dangerous or polluting at all. Please refer to the local regulations for its disposal.

6.2 MACHINE INSTALLATION

The machine has not to be anchored to the floor. For a correct use and operation, as well as for an easy maintenance, leave enough free space around the machine.

Do not place the machine in dangerous and/or explosive/inflammable areas.

6.3 ELECTRICAL WIRING

The electrical wiring must be carried out as indicated on the drawing. Check that the supply voltage and the frequency correspond to those indicated on the rating plate.

The dimensions of the supply cable must suit the machine absorption and comply with the current regulations.

It is advisable to install a switch with fuses or a circuit breaker on the line.

WARNING: After having carried out all the electrical connections, make sure that the cables are protected against any possible hits and are suitably fixed and isolated.

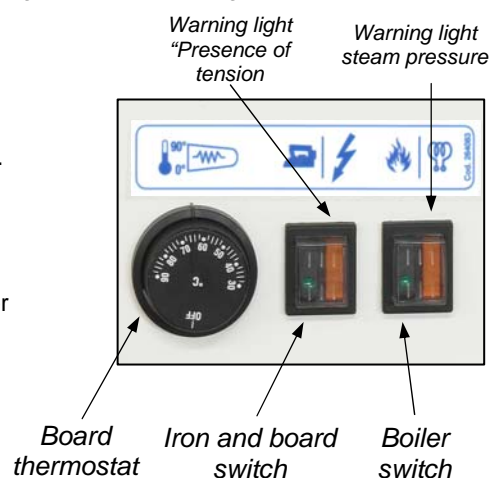
7 INSTRUCTIONS FOR USE

7.1 PUTTING INTO OPERATION

- The whole unit can be used, opened and repaired by qualified technicians only.
- It is forbidden to use the machine if flooded by liquids or in particularly aggressive or explosive/inflammable places.
- Do not ignore the dangers for the operator's health and follow the hygienic and safety regulations.
- Make sure that the electrical wiring is carried out correctly according to the current regulations, and that the fuse blocks are closed and complete of fuses.
- Verify if the machine is intact.

7.2 USE

- Make sure that the tank is filled with distilled or demineralised water.
- Switch on the machine by means of the button next to the thermostat.
- Switch on the boiler by means of the corresponding button.
- Adjust the board temperature by means of the thermostat knob.
- Turn the iron knob to the "cotton" position, symbolized by °°°.
- Wait until the boards have reached the set temperature.
- Wait until the boiler warning light switches on, signalling that the boiler has reached the necessary working pressure.
- The ironing table is now ready for use.
- Push the pedal in order to set off the vacuum on the boards.
- Check occasionally if the water level is sufficient.
- An acoustic signal will indicate when the tank has to be fed with new water.
- At the end of work, switch off the ironing table by means of the corresponding switches.



Warning: Do not unscrew the cap in order to discharge the steam at the end of the ironing operation; **never turn the boiler upside down** to empty the water left inside.

8 TROUBLESHOOTING AND SOLVING

The following diagnostic table indicates the main irregularities which can occur, their probable causes and possible solutions

In case of doubts and/or of problems which can't be solved, do not attempt to disassemble parts of the machine for the troubleshooting, but contact our Technical Department or the PRIMER-reseller, instead.

| DIAGNOSTIC TABLE | | |
|--|--------------------------|---------------------|
| PROBLEMS | POSSIBLE CAUSES | SOLUTIONS |
| The vacuum option on the boards doesn't work | Pedal microswitch defect | Replace microswitch |
| | Plugs not inserted | Insert plugs |
| The boards do not heat up | Defect thermostat | Replace thermostat |
| | Plugs not inserted | Insert plugs |

| | | |
|-----------------------------|--|---|
| The machine doesn't turn on | Main switch turned off | <i>Make sure that the main switch is turned on, verify the fuses.</i> |
| | Switch turned off | <i>Turn the switch on</i> |
| The iron doesn't steam | Iron and boiler switches not turned on | <i>Turn on the switches</i> |

9 PRECAUTIONS

Read carefully the instructions and the risks related to the use of an ironing table. The operator has to know its working functions and must clearly understand its dangers with the help of the manual.

Main electrical supply

Prior to carrying out any inspection or service on the machine, it is necessary to disconnect it from the main electrical supply. Make sure, that nobody can reconnect it during the technical service.

Every installed electrical or electronic equipment must be earthed.

In flammability

Adopt all the necessary precautions to avoid any direct contact of the machine with hot materials or flames. Put fire extinguishers near the machine for an immediate intervention in event of fire.

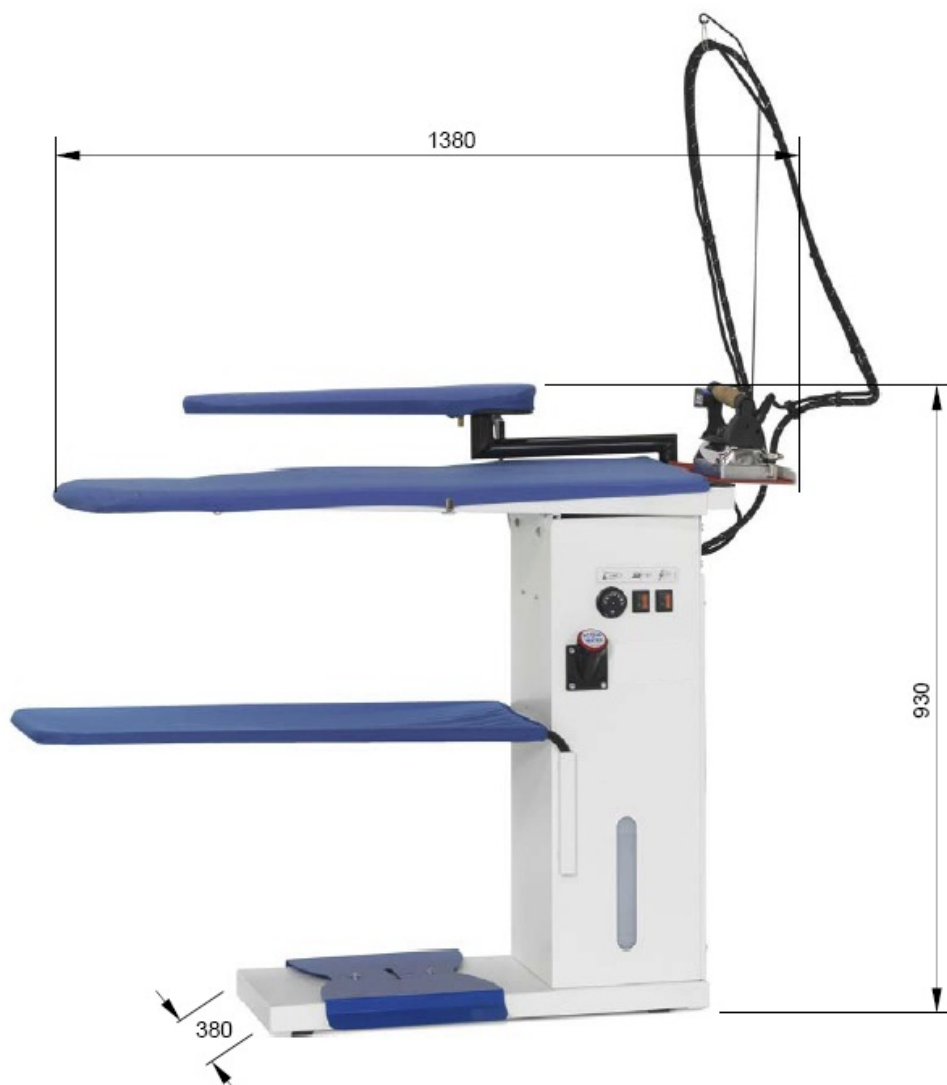
Pressure / Steam

Prior to any intervention, switch the boiler first off, wait until all the pipes are cooled down and check that there are no residual pressures inside the boiler or in any branch of the hydraulic circuit, as they could cause steam spurts, in case of disassembly of fittings or other components.

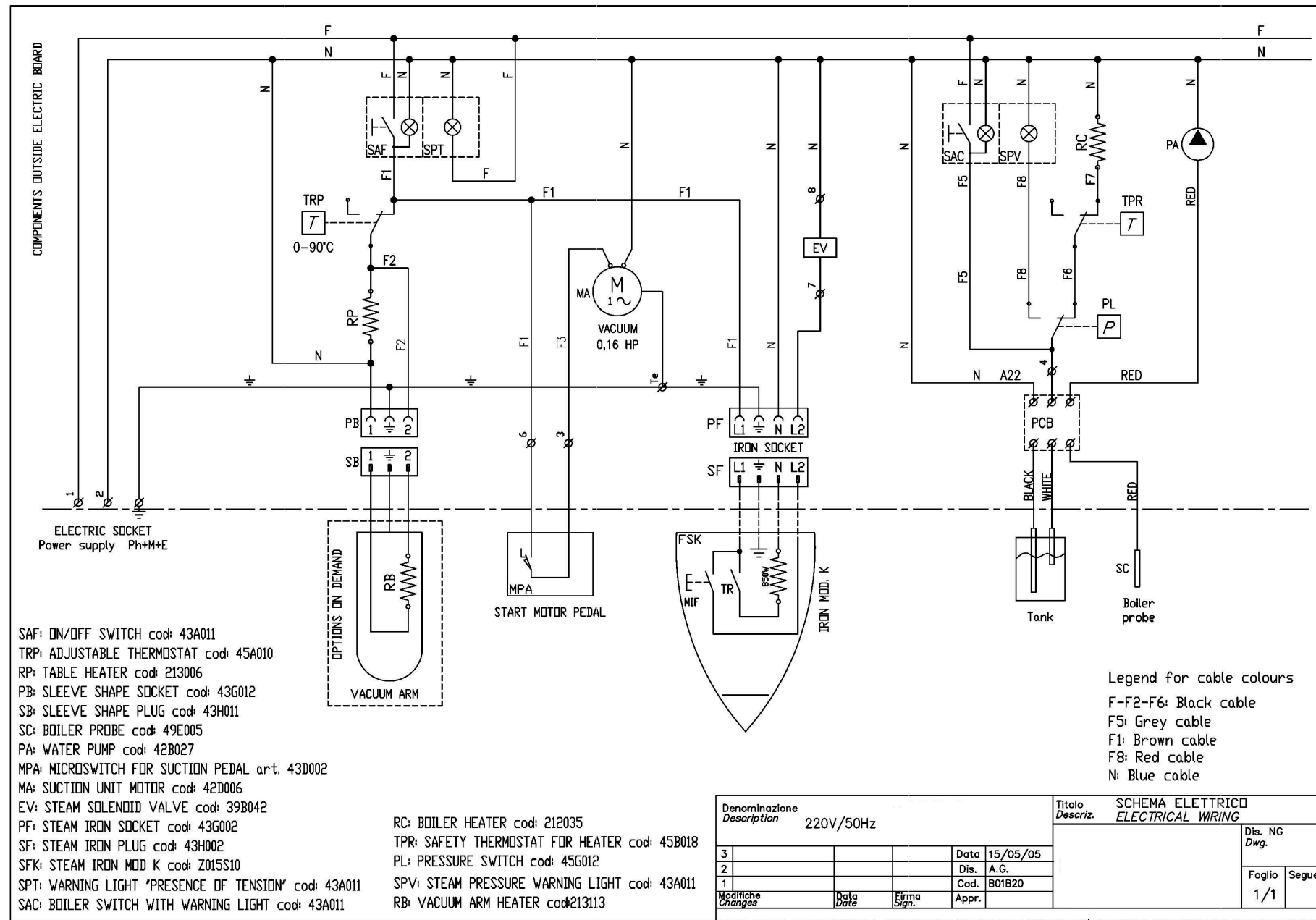
Noise

The machine's noise level is not very high, as it remains under 70dB (A).

10 OVERALL DIMENSIONS AND DRAWINGS



ESQUEMA ELÉCTRICO / ELECTRIC DIAGRAM: FDA-A



11 HAZARDOUS USE

The conformity verification according to the essential safety rules and to the provisions of the machine directive has already been carried out by filling out the specially provided checking lists, included in the technical file.

The checking lists are of two kinds:

- List of dangers (drawn from EN 1050 referring to EN 292)
- Application of the main safety features (Machine Directive— appendix. 1, part 1)

12 MAINTENANCE PROCEDURES

In case of irregularities or malfunctioning, please contact the service technician for the relevant checks.

Periodically, it is necessary to carry out the following operations:

| OPERATION | WORKING HOURS |
|---------------------------------|---------------|
| Complete emptying of the boiler | 30-50 |

This machine does not require special equipment for check and/or maintenance operations. It is however advisable to use suitable tools and personal protections in compliance with the Italian law by decree 626/94, which have to be in good conditions (Presidential Decree 547/55), in order to avoid any damages to persons or machine components.

Make sure that the power supply is disconnected prior to any maintenance service and that the whole equipment has cooled down.

13 DISPOSAL

During the maintenance on the machine, or in case of its scrapping, please dispose carefully and correctly of any polluting components, according to the local regulations. In case of scrapping, the identification rating plate and any other document have to be destroyed.

14 HOW TO ORDER SPARE PARTS

Upon the spare parts request, please quote always:

Machine type, serial number, quantity of the requested spare parts, article number (these data can be read on the rating plate or supplied by the technical information of the machine and by the user's and maintenance manual).

For electrical components with a different voltage and frequency than V 220-380/50Hz (data available on the rating plate of the faulty component), specify the correct voltage and frequency after having mentioned the article number.

The technical data, the descriptions and pictures included in this manual are not binding.

The manufacturer reserves the right to make any necessary modification without prior notice or having to up-date the present manual.

15 HANDLING AND TRANSPORT

Before its shipment, the machine is carefully packed in a carton box. During the shipment and storing of the machine, pay particular attention to the upside indication on the packaging. Upon receipt, please check that the packing is intact and store the machine in a dry place.

16 WARRANTY

All PRIMER products are guaranteed for a maximum period of 12 months from delivery date as far as material and construction defects are concerned.

The warranty is extended as follows:

In case of malfunction of the equipment, please contact your reseller, specifying the noticed defect, type, serial number and furthermore the operating conditions of the machine. After having received the equipment or component and after an accurate analysis, PRIMER reserve the right, whether to repair or to replace the product. If the machine is still under guarantee, the PRIMER reseller will carry out the service or replacement at PRIMER charge. In case the returned goods are not defective, PRIMER reserve the right to charge the customer with the met expenses (shipment, etc.). The present warranty will be declared void, if the machine has been damaged due to improper use, negligence, normal wear, chemical corrosion, installation not according to the provided instructions and to the manufacturer's warnings.

Any modification, tampering and alteration on the machine or its components, carried out without prior written authorization by PRIMER, relieve the latter of any responsibility and annuls any warranty obligation. The components subject to normal wear and the perishable ones are not under warranty, as well as everything, which has not been previously explicitly indicated, or damages or expenses arising from defects of the same product.

The validity conditions of the guarantee provided by PRIMER are considered implicitly accepted upon purchase of the machine. Any possible changes to or derogations from the present guarantee are only valid prior written authorization by PRIMER.



MAQUINARIA PARA EL LAVADO INDUSTRIAL
MACHINES FOR THE INDUSTRIAL LAUNDRY
MACHINES POUR LE LAVAGE INDUSTRIEL
LAVATRICE INDUSTRIALE

C/Comerç, 6-12 -08504 Sant Julià de Vilatorra (BARCELONA-SPAIN)
Web www.primer.es

SERVICIO COMERCIAL - SALES – COMMERCIALE – SERVIZIO POST VENDITA

Tel. +34 938 122 770 / Tel. Mob. : 608 351 407 Fax +34 938 122 771 e-mail info@primer.es

**SERVICIO POST-VENTA - AFTER SALE SERVICE - SERVICE APRÈS VENTE –
SERVIZIO POST VENDITA**

Recambios – Spare Parts – Pieces detachées - Ricambios

Tel. +34 938 122 775 Fax +34 938 122 727 e-mail parts@primer.es / parts@primerlaundry.com

Asistencia Técnica – Technical Service - Assistenza Technique – Assistenza tecnica

Tel. +34 938 122 732 Fax +34 938 122 727 e-mail sat@primer.es / sat@primerlaundry.com